

# Unleash your child's potential with once-weekly Sogroya<sup>®</sup> growth hormone treatment



This brochure can help you LEARN MORE about Sogroya<sup>®</sup> and whether it may be RIGHT FOR YOUR CHILD.

## What is Sogroya<sup>®</sup>?

- Sogroya<sup>®</sup> (somapacitan-beco) injection 5 mg, 10 mg or 15 mg is a prescription medicine that contains human growth hormone, the same growth hormone made by the body.
- It is given by injection under the skin (subcutaneous) and is used to treat adults and children 2.5 years and older who do not make enough growth hormone.



Please see additional Important Safety Information throughout.  
Please [click here](#) for Prescribing Information.

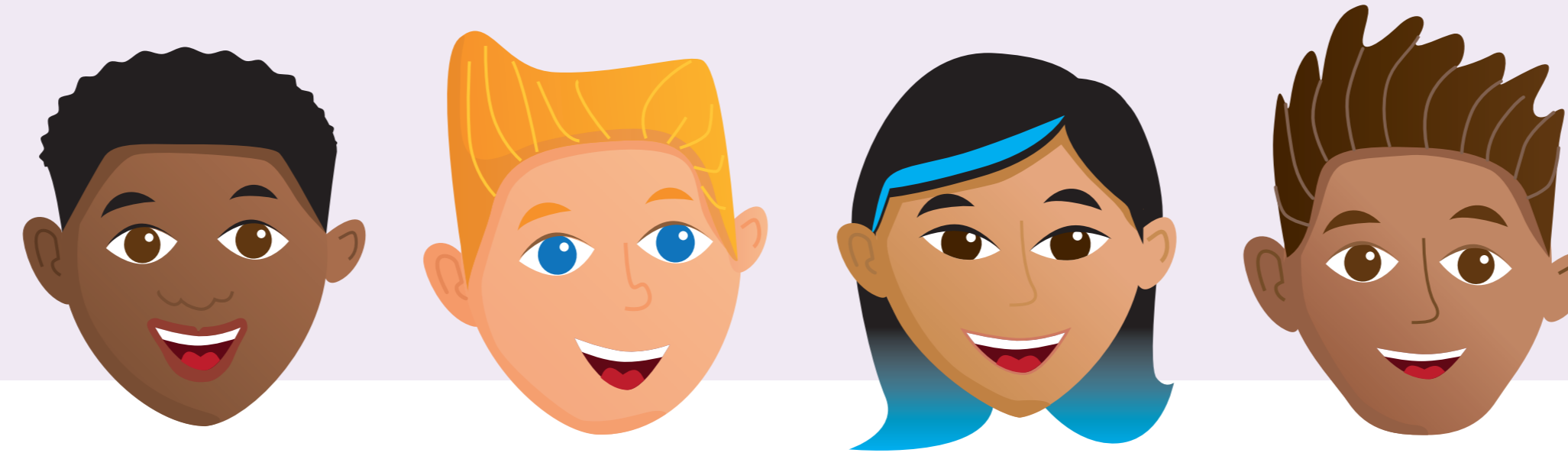
Imagine the possibilities



ONCE-WEEKLY  
**SOGROYA<sup>®</sup>**  
somapacitan-beco  
injection 5mg | 10mg | 15mg

# Seeking treatment for your child with growth hormone deficiency (GHD)?

## Key considerations to keep in mind



**Take action** as early as you can to address growth issues



**Early treatment** in children may help their **ability to grow**



Over time, children may experience challenges with **a daily injection routine**, especially during adolescence and as they approach adulthood



*Growth hormone (GH) therapies were only available as daily injections—until recently.*

*Talk to your doctor to see if a once-weekly treatment may help.*

# Long-acting GH treatments are now available for once-weekly dosing

## Consider the following:



According to the expert opinion from the Growth Hormone Research Society, a once-weekly GH option may offer patients and families flexibility and a therapeutic alternative

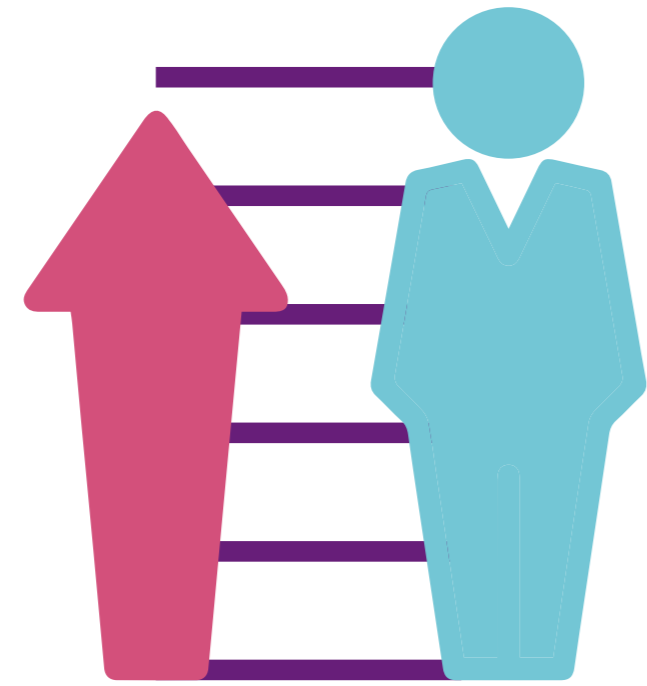
- How might your **child's needs and lifestyle change** as they get older?
- How does **treatment fit into their lives** right now and moving forward?



# Let's get growing...with Sogroya<sup>®</sup>

## Sogroya<sup>®</sup> promotes growth with 1 injection per week

In a 1-year (52-week) study of 200 children who had never been treated for GHD, Sogroya<sup>®</sup> was compared with a daily GH treatment (somatropin).<sup>a</sup>



Children taking Sogroya<sup>®</sup> grew **4.4 inches (11.2 cm), on average, at 1 year**

- Children taking daily GH grew 4.6 inches (11.7 cm), on average, at 1 year

<sup>a</sup>The main goal of this study was to see if children who took Sogroya<sup>®</sup> once per week grew at the same rate as children who took the daily GH treatment.

## Important Safety Information

### Do not use Sogroya<sup>®</sup> if:

- you have a critical illness caused by certain types of heart or stomach surgery, trauma or breathing problems
- you have cancer or other tumors
- you are allergic to somapacitan-beco or any of the ingredients in Sogroya<sup>®</sup>
- your healthcare provider tells you that you have certain types of eye problems caused by diabetes
- you are a child with closed bone growth plates
- you are a child with Prader-Willi syndrome who is severely obese or has breathing problems including sleep apnea (briefly stopping breathing during sleep)

### Before taking Sogroya<sup>®</sup>, tell your healthcare provider about all of your medical conditions, including if you:

- have had heart or stomach surgery, trauma, or serious breathing problems
- have had cancer or any tumor
- have diabetes
- have adrenal gland problems
- are taking replacement therapy with glucocorticoids
- have thyroid gland problems
- have liver problems
- are a child with a history of worsening of curvature of the spine (scoliosis)



# Sogroya<sup>®</sup> has a proven safety profile

The most common side effects of Sogroya<sup>®</sup> in children include:

common cold

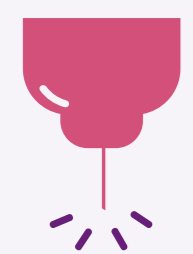
headache

fever

pain in extremity

reaction to injection

6.1% of patients taking Sogroya<sup>®</sup> experienced injection-site reactions, which included:



1.5%  
injection-site  
pain

1.5%  
injection-site  
bruising

1.5%  
injection-site  
hematoma

0.8%  
injection-site  
reaction

0.8%  
injection-site  
swelling

**Talk to your child's doctor**  
for medical advice about these  
and other possible side effects.

## Important Safety Information

**Before taking Sogroya<sup>®</sup>, tell your healthcare provider about all of your medical conditions, including if you:**

- are pregnant or plan to become pregnant. It is not known if Sogroya<sup>®</sup> will harm your unborn baby. Talk to your healthcare provider if you are pregnant or plan to become pregnant
- are breastfeeding or plan to breastfeed. It is not known if Sogroya<sup>®</sup> passes into your breast milk. You and your healthcare provider should decide if you will take Sogroya<sup>®</sup> while you breastfeed

**Tell your healthcare provider about all the medicines you take**, including prescription and over-the-counter medicines, vitamins, and herbal supplements. Sogroya<sup>®</sup> may affect the way some medicines work, and some medicines may affect how Sogroya<sup>®</sup> works.

## How should I use Sogroya<sup>®</sup>?

- Use Sogroya<sup>®</sup> exactly as your healthcare provider tells you to
- Use Sogroya<sup>®</sup> **1 time each week**
- If you miss a dose of Sogroya<sup>®</sup>, the missed dose can be taken within 3 days (72 hours) after the scheduled dosing day. One-time weekly dosing for the next dose can be started again on the regularly scheduled dosing day
- If more than 3 days (72 hours) have passed, skip the missed dose, and take your next dose on the regularly scheduled dosing day
- Sogroya<sup>®</sup> pens are for use by 1 person only
- **Do not share your Sogroya<sup>®</sup> pens and needles with another person, even if the needle has been changed. You may give another person an infection or get an infection from them**

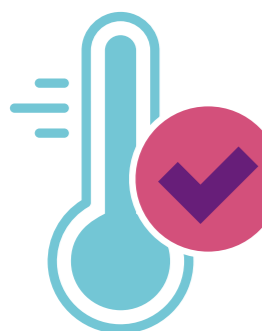
# Get to know the Sogroya<sup>®</sup> pen

It's easy to learn to use<sup>a</sup> and designed with your lifestyle in mind



## READY TO USE

Prefilled—no cartridges and no preparation of the medicine is required



## PORTABLE

Stable at room temperature (up to 77 °F) for up to 3 days (72 hours)<sup>b</sup>



## FAMILIAR

Based on the FlexPro<sup>®</sup> with more than 10 years of patient experience

Compatible with NovoFine<sup>®</sup> needles—**designed to minimize pain**



Pen is for illustrative purposes only.

<sup>a</sup>In a study, 94 people used the Norditropin<sup>®</sup> FlexPro<sup>®</sup> 30 mg pen to inject into a foam cushion and rated it a 6.7 out of 7 (on a scale of 1 to 7, where 1 means “strongly disagree” and 7 means “strongly agree”), as “easy to learn to use.” The Norditropin<sup>®</sup> FlexPro<sup>®</sup> is similar to the Sogroya<sup>®</sup> pen.

<sup>b</sup>The pen should be refrigerated (36 °F-46 °F). The pen can be taken in and out of a refrigerator as needed. The pen must be discarded 6 weeks after first use, or if it has been frozen, or in temperatures warmer than 86 °F. Keep Sogroya<sup>®</sup> away from direct heat and light.

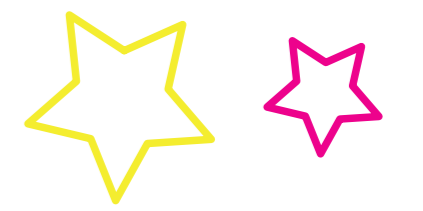
## Important Safety Information

### What are the possible side effects of Sogroya<sup>®</sup>?

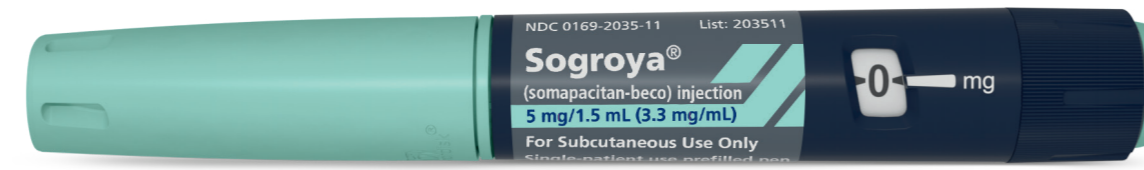
Sogroya<sup>®</sup> may cause serious side effects, including:

- high risk of death in people who have critical illnesses because of heart or stomach surgery, trauma, or serious breathing problems
- increased risk of growth of cancer or a tumor that is already present and increased risk of the return of cancer or a tumor in people who were treated with radiation to the brain or head as children and who developed low growth hormone problems. You or your child's healthcare provider will need to monitor you or your child for a return of cancer or a tumor. Contact the healthcare provider if you or your child start to have sudden changes in behavior, headaches, vision problems, or changes in moles, birthmarks, or the color of your or your child's skin

# Sogroya<sup>®</sup> pens are available in 3 different dosing strengths



## 5 mg/1.5 mL



Dials in 0.025 mg increments and delivers doses from 0.025 mg to 2 mg.

## 10 mg/1.5 mL



Dials in 0.05 mg increments and delivers doses from 0.05 mg to 4 mg.

## 15 mg/1.5 mL



Dials in 0.1 mg increments and delivers doses from 0.1 mg to 8 mg.

Read the Instructions for Use in the enclosed Prescribing Information, and talk with your doctor about how to use the Sogroya<sup>®</sup> pen.

*Your child's healthcare provider will tell you which Sogroya<sup>®</sup> pen is right for your child and how to use it.*

*Your child will have the same starting dose whether they are new to GH treatment or switching from a daily GH treatment.*

*Pick the same day of the week to take your scheduled dose of Sogroya<sup>®</sup>*

## Important Safety Information

### What are the possible side effects of Sogroya<sup>®</sup>?

Sogroya<sup>®</sup> may cause serious side effects, including:

- new or worsening high blood sugar or diabetes. You or your child's blood sugar may need to be monitored during treatment with Sogroya<sup>®</sup>
- increase in pressure in the skull. If you or your child have headaches, eye problems, nausea or vomiting, contact the healthcare provider
- serious allergic reactions. Get medical help right away if you or your child have the following symptoms: swelling of your face, lips, mouth, or tongue, trouble breathing, wheezing, severe itching, skin rashes, redness, or swelling, dizziness or fainting, fast heartbeat or pounding in your chest, sweating
- your or your child's body holding too much fluid (fluid retention) such as swelling in the hands and feet, pain in your or your child's joints or muscles or nerve problems that cause pain, burning or tingling in the hands, arms, legs, and feet. Tell your or your child's healthcare provider if you or your child have any of these signs or symptoms of fluid retention
- decrease in a hormone called cortisol. The healthcare provider will do blood tests to check your or your child's cortisol levels. Tell your or your child's healthcare provider if you or your child have darkening of the skin, severe fatigue, dizziness, weakness, or weight loss

## NovoCare<sup>®</sup> supports the GH treatment journey

Whether it's guiding you through the insurance process or teaching kids how to take Sogroya<sup>®</sup>, NovoCare<sup>®</sup> is here to help.



### NovoCare<sup>®</sup>

- ✓ Patient Assistance Program (PAP) for eligible patients<sup>a</sup>
- ✓ Sogroya<sup>®</sup> savings card offer
- ✓ JumpStart<sup>™</sup> program to avoid delay in starting therapy
- ✓ In-person or virtual device training

Visit [NovoCare.com](https://www.novocare.com) for more information and to request your Sogroya<sup>®</sup> Starter Kit

## Meet your pen pal!

The Sogroya<sup>®</sup> Starter Kit comes with a stuffed animal buddy pen pal and will help you and your child become comfortable taking GH injections safely, correctly, and consistently.

### The Starter Kit includes:

- Your stuffed animal buddy to help demonstrate how and where to take injections
- Your stuffed animal buddy companion book
- A Sogroya<sup>®</sup> sample pen
- Sharps container for disposal of needles
- Alcohol wipes to prepare skin for injection
- Starter Kit cinch bag to keep injection materials together
- Much more, including instruction booklets for Sogroya<sup>®</sup> pens and information about how Sogroya<sup>®</sup> works

<sup>a</sup>Eligible uninsured and underinsured patients may receive therapy at no cost until insurance or financial circumstances improve, including patients whose appeals for therapy approval have been denied. Eligibility and restrictions apply.

## Important Safety Information

### What are the possible side effects of Sogroya<sup>®</sup>?

Sogroya<sup>®</sup> may cause serious side effects, including:

- decrease in thyroid hormone levels. Decreased thyroid hormone levels may affect how well Sogroya<sup>®</sup> works. The healthcare provider will do blood tests to check you or your child's thyroid hormone levels
- severe and constant abdominal pain. This could be a sign of pancreatitis. Tell your or your child's healthcare provider if you or your child has any new abdominal pain
- loss of fat and tissue weakness in the area of skin you or your child inject. Talk to your or your child's healthcare provider about rotating the areas where you or your child inject Sogroya<sup>®</sup>



# Unleash their potential with once-weekly Sogroya®

Ask your doctor about starting or switching your child aged 2.5 years and older with GHD to once-weekly Sogroya®



## FDA APPROVED

First and only FDA-approved weekly treatment for both children and adults with GHD



## READY TO USE AND PORTABLE

The Sogroya® pen requires no cartridges and is stable at room temperature (up to 77 °F) for up to 3 days (72 hours)<sup>a</sup>



## 313 FEWER INJECTIONS PER YEAR

With 1 injection per week instead of 7

Visit [Sogroya.com](https://www.sogroya.com) for more information about **how Sogroya® works and how to take it**

<sup>a</sup>The pen should be refrigerated (36 °F-46 °F). The pen can be taken in and out of a refrigerator as needed. The pen must be discarded 6 weeks after first use, or if it has been frozen, or in temperatures warmer than 86 °F. Keep Sogroya® away from direct heat and light.

## Important Safety Information

### What are the possible side effects of Sogroya®?

**Sogroya® may cause serious side effects, including:**

- worsening of curvature of the spine in children (scoliosis)
- hip and knee pain or a limp in children (slipped capital femoral epiphysis)
- high risk of sudden death in children with Prader-Willi syndrome who are severely obese or have breathing problems, including sleep apnea
- increase in phosphorus, alkaline phosphatase, and parathyroid hormone levels in your blood. You or your child's healthcare provider will do blood tests to check this

**The most common side effects of Sogroya® in children include:** common cold, headache, fever, pain in extremity, and reaction to injection

**The most common side effects of Sogroya® in adults include:** back pain, joint pain, indigestion, sleep problems, dizziness, swelling of the tonsils (tonsillitis), vomiting, high blood pressure, increase in the level of an enzyme in your blood called creatine phosphokinase, weight gain, and low red blood cells (anemia)

Sogroya® is a prescription medication. You are encouraged to report negative side effects of prescription drugs to the FDA. **Visit [www.fda.gov/medwatch](https://www.fda.gov/medwatch) or call 1-800-FDA-1088.**

Please see additional Important Safety Information throughout. Please [click here](#) for Prescribing Information.



Sogroya®, Norditropin®, and FlexPro® are registered trademarks of Novo Nordisk Health Care AG.  
JumpStart™ is a trademark of Novo Nordisk A/S.  
NovoCare®, Novo Nordisk, and NovoFine® are registered trademarks of Novo Nordisk A/S.  
© 2023 Novo Nordisk Produced in the U.S.A. US23SOM00110 May 2023

Imagine the possibilities



ONCE-WEEKLY  
**SOGROYA®**  
somapacitan-beco  
injection 5mg | 10mg | 15mg

